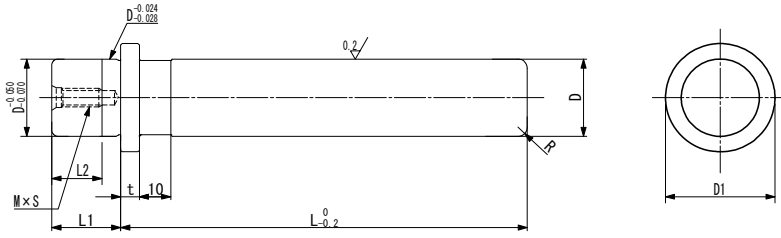
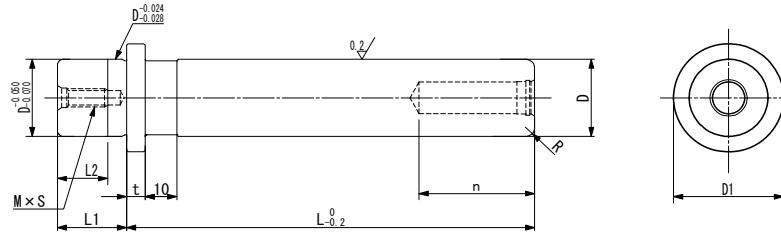


### ダイセット用ガイドポスト

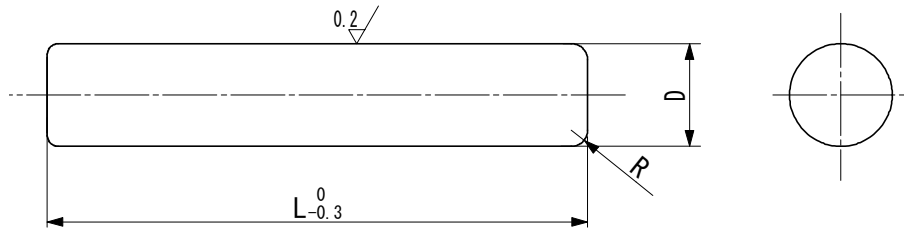
ETGP



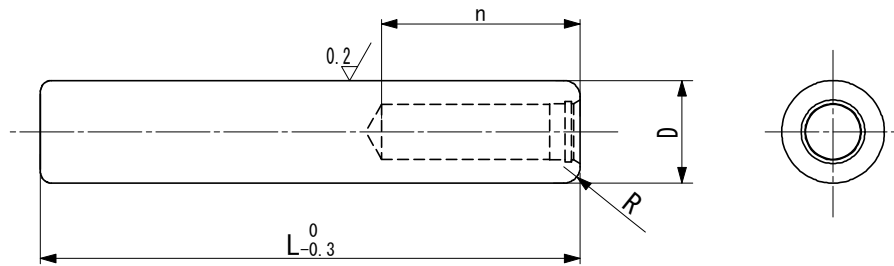
ETRP



ESGP



ESRP



ダイセット仕様表  
 材質 SUJ2  
 硬度 HRC62±2(高周波焼入れ)

D	D1	t	L1	L2	n	M×S	R
20	30	6	18	11	46	M6×15	2.5
22	32						
25	35						
28	38						
32	44	8	27	19	70	M8×20	4
36	48						
38	50						
45	60						
50	66	10	38	28	80	M10×20	5
56	72						

## ダイセット用ガイドポスト価格表

		L																
Type	D	80	90	100	110	120	130	140	150	160	170	180	190	200	220	240	260	
着脱ポスト	ETGP	20	788	788	788	855	855											
		22	885	885	885	953	953											
		25	1,005	1,005	1,005	1,073	1,073	1,073										
		28		1,238	1,238	1,238	1,238	1,388	1,388	1,388								
		32				1,485	1,485	1,485	1,613	1,613								
		38						1,868	1,868	1,868	2,055	2,055						
		45						2,243	2,243	2,243	2,558	2,558						
		50								3,158	3,158	3,533				3,533		
		60								3,915	3,915	4,230				4,230		
	ETRP (可動スッパ-)	20	983	983	983	1,043	1,043											
		22	1,073	1,073	1,073	1,133	1,133											
		25	1,238	1,238	1,238	1,328	1,328	1,328										
		28		1,455	1,455	1,455	1,455	1,613	1,613	1,613								
		32				1,763	1,763	1,763	1,890	1,890								
		38						2,145	2,145	2,145	2,333	2,333						
		45						2,655	2,655	2,655	2,903	2,903						
		50								3,413	3,413	3,788				3,788		
		60								4,418	4,418	4,673				4,673		
圧入ポスト	ESGP	20		435	435	435	435	435	4,955	495	495	495						
		22				533	533	533	533	593	593	593						
		25				615	615	615	615	660	660	660						
		28						720	720	720	720	810	810	810				
		32								900	900	900	900	1,058	1,058	1,058		
		38										1,125	1,125	1,125	1,425	1,425	1,425	
		45										1,365	1,365	1,365	1,740	1,740	1,740	
		50												1,808	1,808	2,235	2,235	
		ESRP (可動スッパ-)	20		615	615	615	615	615	683	683	683	683					
	22					720	720	720	720	780	780	780						
	25					810	810	810	810	870	870	870						
	28							930	930	930	930	1,058	1,058	1,058				
	32									1,178	1,178	1,178	1,178	1,298	1,298	1,298		
	38											1,425	1,425	1,425	1,680	1,680	1,680	
	45										1,680	1,680	1,680	1,980	1,980	1,980		
50												2,108	2,108	2,543	2,543			